



## ***Chongqing Drawell Intelligent Equipment Co.,Ltd***

Main Products:laser marking machine,dot peen marking machine  
laser welding machine,laser cleaning machine

### ***Chongqing Drawell Intelligent Equipment Co.,Ltd***

Tel: +86-023-63268643

E-mail: [drawell@drawell-wellable.com](mailto:drawell@drawell-wellable.com)

Website: [www.drawell-wellable.com](http://www.drawell-wellable.com)

Add: Suite 2705-2713,Building No.12,Shiyu Road No.1,Yuzhong District, Chongqing, China

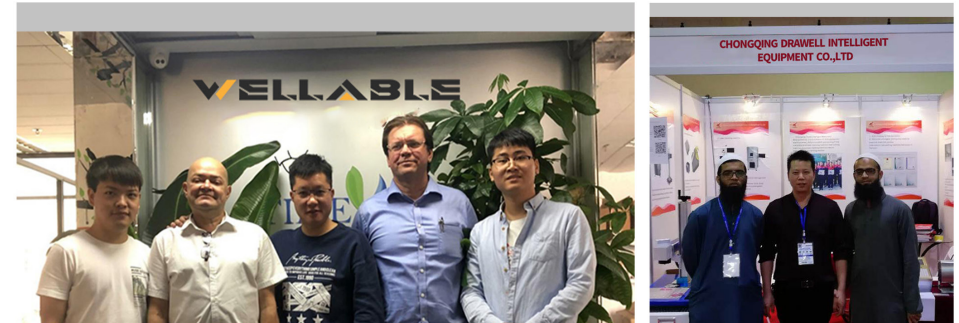


## Company Profile

Chongqing Drawell Intelligent Equipment Co.,Ltd via Drawell International Technology Limited belong to Drawell Group. By the brand of Wellable, We are a R&D, production, sales and service as one of the most outstanding laser marking machines export manufacturers.



Wellable is specialized in laser marking machine ,pneumatic marking machine, electric marking machine etc. And it takes the production and research experience of 14 years and export experience of 17 years, Combined the domestic and foreign advanced experiences, introduce advanced equipment, we aspire to become a professional one-stop marking devices service provider.



To be a professional marking manufacturer in the world . We are committed to attending overseas exhibitions, such as Pakistan, Thailand, South Africa, Russia, India, Malaysia and etc. Now Wellable already has established business relationships with customers from more than 50 countries, and enjoyed a good reputation through reliable quality, competitive price and good service.

## CO2 Laser Marking Series

Co2 laser marking machine is suitable for most non-metallic materials and some of the metal marking, such as packaging, plastic products, labels, leather, fabrics, glass ceramics, wood products, PCB boards, etc.

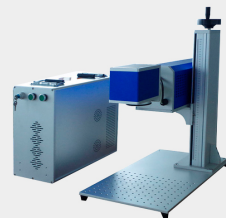
Flying Type



Desktop Type

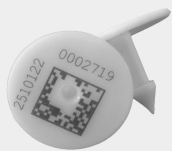


Bench Top Type



## Marking Samples

QR Code on Plastics



Marking on Denim Fabric



Marking on Organic Materials



## Features

- Good beam quality
- Long service life
- Fast processing speed
- No consumables, no maintenance
- High electro-optic conversion rate
- Suitable for most non-metallic materials
- High precision, suitable for fine operation

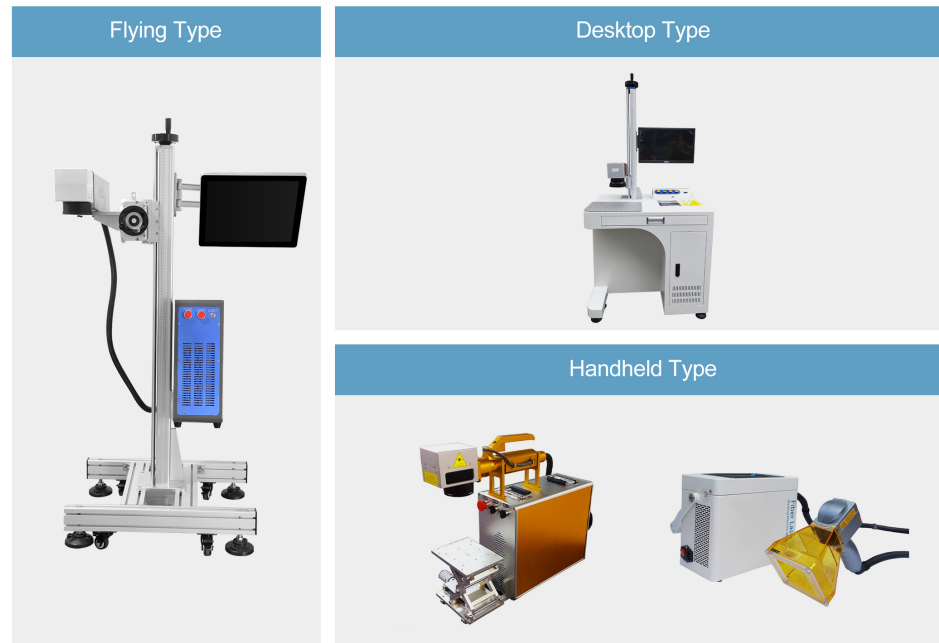
## Specifications

|                        |  |
|------------------------|--|
| Laser output power     | 30W/40W/50W/70W/100W/150W optional   |
| Laser wavelength       | 10640nm  |
| Marking accuracy       | Less than 0.001mm  |
| Marking area           | 260mm*260mm/210mm*210mm/175mm*175mm/<br>100mm*100mm optional third axis moving table |
| Marking speed          | Less than 7000mm/s   |
| Marking control system | Offline  |
| Cooling system         | According to the laser   |
| Power supply           | AC220V±5%/50HZ   |
| Graphics format        | AI, BMP, PLT, DXF, DST, etc.   |



## Fiber Laser Marking Series

Fiber laser marking has a wide application range. It can be widely used in IC chips, computer accessories, industrial bearing, watches and clocks, electronic communications products, aero-space components, all kinds of auto parts, household appliances, hardware tools, molds, wire and cable, food packaging, jewelry, tobacco and military affairs, and many other fields which needs graphics and text markup, as well as assembly line assignments.



## Marking Samples



## Features

- No tool wear, good marking quality
- Little affected zone by heat
- Thin laser beam , small consumption
- Non contact processing, no damage to the product
- Engrave on a variety of metal, non-metallic materials
- Marking on high hardness, high melting point and brittle materials

## Specifications

|                     |  |
|---------------------|--|
| Laser output power  | 10W/20W/30W/50W optional   |
| Light beam quality  | <2   |
| Marking speed       | 7000mm/s   |
| Marking area        | 100mm*100mm/200mm*200mm/300mm*300mm customized                                     |
| Marking contents    | Graphics, text, bar codes, two-dimensional code, date, batch number, serial number |
| Marking depth       | 0.01-1mm   |
| Repeating precision | ±0.002   |
| Minimum line width  | 0.01mm   |
| Working voltage     | AC220V±10%/5Hz/4A  |
| Total power         | <500W  |
| Laser module life   | 100000-200000hours   |

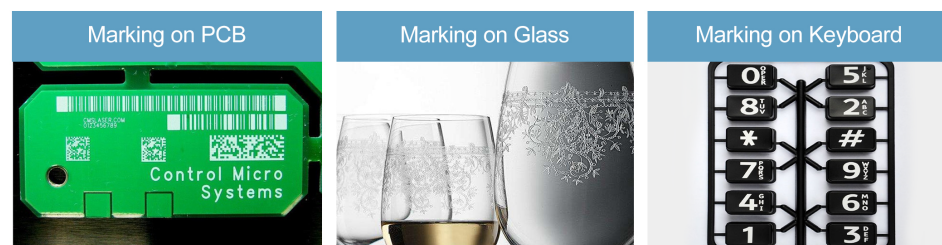


## UV Laser Marking Series

Our UV Laser marking machine can marking on a wide range of materials, such as paper, white plastic, ABS, PA, glass, etc. In addition, our UV laser marking machine is capable of generating a great contrast for more appealing results and improved readability on 2D codes. When comes to manufacturing, quality always comes first. We choose our supplier very careful, from the laser source to the galvanometer, from the industrial tablet to a single power button, from the lens to a single screw, from the electric lifting motor to a single USB port. We inspect every detail of our products before we assemble them in our factory, and this is our first sstep of making sure what we made is precisely what you want.



## Marking Samples



## Features

- Small spot and the heat affected zone
- Much higher material absorption rate
- More sharp and clear marking results
- Marking on a wide range of materials
- Suitable for superfine and special material marking
- No thermal effect
- More efficient marking process

## Specifications

|                      |                            |
|----------------------|----------------------------|
| Laser output power   | 3W/5W/8W/10W/optional      |
| Marking range        | 50mm*50mm/100mm*100mm      |
| Marking speed        | 7000mm/s                   |
| Beam quality         | Less than 4                |
| Adjusted Q frequency | 8KHz-15KHz                 |
| Engraving speed      | Less than 7000nm/s         |
| Minimum line width   | 0.01mm                     |
| Minimum character    | 0.2mm                      |
| Repeat accuracy      | +0.003mm                   |
| Total power          | 2KW                        |
| Power demand         | 200V/single phase/50Hz/10A |

## Laser Welding Series

This laser welding machine is used for fabricators of precision processing, medical equipment, electronics, battery aluminum shells, connectors, hardware accessories, kettles, sinks, clock precision parts, automobiles, this handheld laser welder fits for welding of thin metals and welds stainless steel, aluminum, copper, and other metals effortlessly.



## Welding Samples



## Features

- Permanent welds with excellent efficiency
- Multi-welding modes to solve your welding challenges
- Custom fiber cable length
- No senior technician, simple operations

## Specifications

|                          |                             |
|--------------------------|-----------------------------|
| Conduction Type          | Fiber                       |
| Wavelength               | 1064nm                      |
| Power                    | 100W/200W/1000W/1500W/2000W |
| Frequency                | 20-5KHz                     |
| Output Focal Length      | 120mm                       |
| Cooling Method           | Water Cooling               |
| Fiber Length             | 5M/10M/15M                  |
| Port                     | 1 way gas                   |
| Power Consumption        | ≤6KW                        |
| Air Pressure Requirement | 4-6 Bar                     |

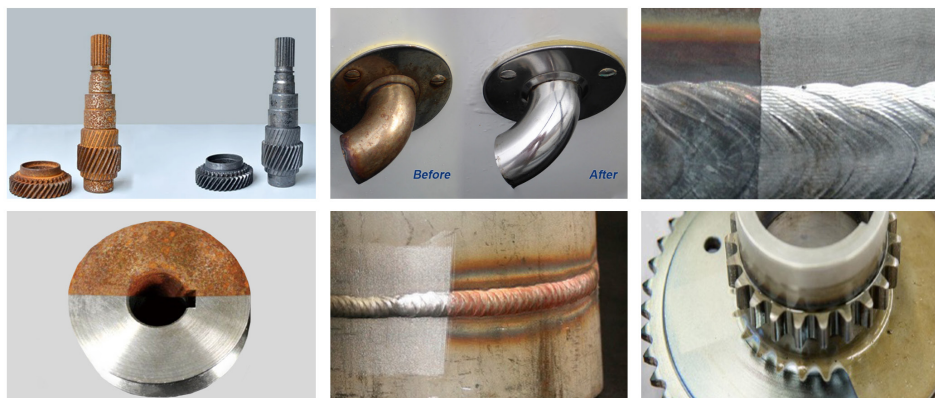


## Laser Cleaning Series

Laser cleaning machines are used in the electronics industry, pre-treatment for brazing and welding, cleaning of molds, cleaning of old aircraft paint, local removal of coatings and paints. Compared with traditional cleaning technology, laser cleaning technology has great advantages in economic benefits, cleaning effect and "green engineering".



## Cleaning Samples



## Features

- More green, energy-saving and efficient industrial cleaner
- Non-contact and strictly controlled manner
- Easy to operate in handheld type
- Simple software of various parameter graphics

## Specifications

|                                       |                                  |
|---------------------------------------|----------------------------------|
| Power                                 | 100W/200W/300W/500W/1000W/1500W  |
| Average Power                         | ≥200W                            |
| Power                                 | 100W/200W/1000W/1500W/2000W      |
| Screen Size                           | 7 inch(4.3/10 inch optional)     |
| Applicable Material                   | Stainless Steel, Aluminum, Metal |
| Laser Pulse Width Adjustment Function | Supported                        |
| Focus                                 | 160mm(100-500mm optional)        |
| Cleaning Head Size                    | 367*70*75(L*W*H)                 |
| Cleaning Head Weight                  | Less than 0.95KGS                |
| Scanning Size                         | 100*100mm                        |
| Maximum Scanning Line Speed           | 20m/s max                        |
| Galvanometer Type                     | Digital Galvanometer             |
| Vibration Lens Material               | Monocrystalline Silicon          |
| Mirror Material                       | Imported Quartz                  |
| Field Lens Material                   | Imported Quartz                  |
| Cable Length                          | 6m(Customization is supported)   |
| Operate                               | Handheld/Automated               |

## Dot Peen Marking Series

Pneumatic marking series are powered either by compressed air. It can mark on basically all metals with numbers, letter, symbols, and even QR code, provide high traceability to your products. It can be used in nameplate marking, part number marking, etc.

The technology is also widely used in agricultural machinery, the oil&gas industry, metalwork-ing industries, electronics components, transportation and logistics industries, construction equipment, etc.

Wellable can offer the solutions that fit seamlessly into your production processes.



## Marking Samples



## Features

- Cost-effective technology
- Applied in mechanical part
- Clear, permanent identification and Data Matrix code marking
- Ideal for many aerospace, oil & gas and other manufacturing applications

## Specifications

|                               |  |
|-------------------------------|--|
| Marking speed                 | 2-5 characters (2x2mm)/s   |
| Stroke frequency              | 300times/s   |
| Marking depth                 | 0.01 to 1mm(very to the material)  |
| Marking contents              | Alphanumeric info, data matrix or dot matrix 2D codes, shift codes, bar code, serial number, date VINcode, time, letter, figure, logo, graphics and etc. |
| Stylus pin hardness           | HRA92/HRA93  |
| Marking area                  | 80*40mm/130*30mm/140*80mm/200*200mm  |
| Marking materials             | Below HRC60 metallic and nonmetallic materials, above HRC60 need special stylus  |
| Repeat accuracy               | 0.02-0.04mm  |
| Working voltage               | AC 110V 60HZ or 220V 50HZ  |
| Compressed air(pneumatic air) | 0.2-0.6Mpa   |
| Connection                    | USB and RS-232   |
| Controller                    | 7"LCD touch screen controller/Windows 7& Windows XP  |
| Power type                    | Pneumatic/electric   |
| Marking directions            | Up, down, left, right, and the circular arc surface marking  |
| Gross weight                  | 47KG   |



## Scribe Engraving Series

The pneumatic scribing machine is widely used for metal and non-metal materials, especially for VIN code on the surface of car. The noise is low during working, which can meet the needs of deep marking. And the double guide ball screw drive mode is adopted, increasing the stability of the movement and accuracy.



## Marking Samples



## Features

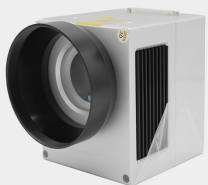
- Fast printing speed
- Durable Scratch needle
- Extreme low noise deep steel marking
- Ergonomic mobile system with pneumatic or manual clamping
- Suitable for steel, stainless steel, iron, copper, aluminum, alloys, etc
- Double-rail ball screw drive mode increase stability and accuracy

## Specifications

|                               |  |
|-------------------------------|--|
| Large marking range           | 150*90mm(customized, up to 500*500mm)                                  |
| Marking speed                 | 1-180 characters/score   |
| Marking contents              | Numbers, characters, English letters, common symbols, various graphics |
| Air pressure range            | 0.2Mpa-0.8Mpa  |
| Repeated positioning accuracy | 0.02mm   |
| Depth of characterization     | 0.01-1.8mm   |
| Scratch width                 | 0.1-3.4mm  |
| Scribing noise                | <60 decibels   |
| Equipment power               | <400W  |
| Shock frequency               | 130-300Hz  |
| Scratch materials             | Metals, nonmetals  |

## Marking Machine Accessories

Galvo lens



Field lens



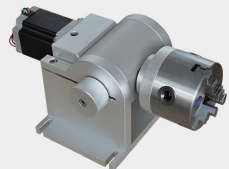
Control card



Laser goggles



Rotating marking system



Raycus source



## Dot Peen Machine Accessories

Cable



Drive



Guide rail



Manual fixture



PC Control



Pneumatic fixture



Touchscreen Control



Motor

